



CORPORATE OPERATING BUDGET CY 2016

LEGAL AUTHORITY

RA 7621 OTHERWISE KNOWN AS THE CHARTER
OF THE CEBU PORT AUTHORITY

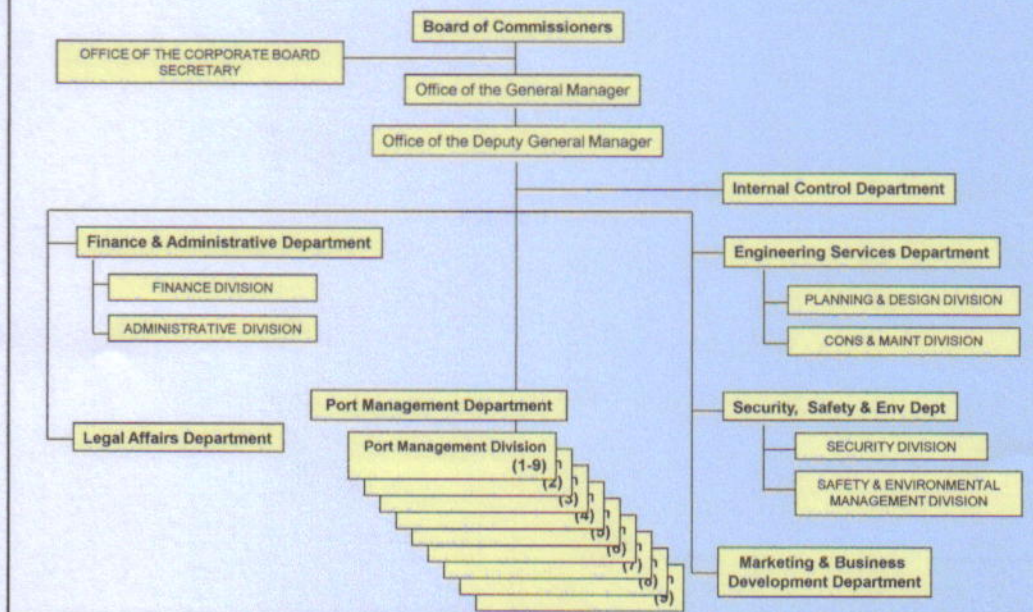
ENACTED INTO LAW 26 JUNE 1992

OPERATIONALIZED 01 JANUARY 1996

GENERAL MANDATE

- Operate and maintain the port system within the Province of Cebu
- Integrate and coordinate the planning, development and construction of ports and port facilities
- Enhance flow of international and domestic commerce passing thru regional ports

MANAGEMENT & ORGANIZATION



REVENUE

Particulars	2013	2014	2015	2016
	(Audited)	(Audited)	Unaudited	Projection
Revenue from Operations				
Vessel Usage Fees				
Foreign	78,943	88,079	106,421	109,752
Domestic	53,209	62,908	58,044	61,081
Wharfage Dues				
Wharfage - Export	23,106	22,138	17,709	18,512
Wharfage - Import	129,945	154,872	186,980	203,684
Wharfage Domestic	127,567	149,500	166,974	174,710
Storage	97,224	246,968	388,700	464,312
Share from Cargo Handling				
Arr/Stev. Foreign	138,092	178,358	227,542	250,296
Arr/Stev. Domestic	139,848	140,754	165,021	181,925
Cranage	29,738	46,941	56,543	61,903
Other Income	84,825	127,130	154,861	157,528
Fund Mgmt. Income	4,340	3,122	2,533	3,000
TOTAL	906,837	1,220,770	1,531,328	1,686,704

INCOME STATEMENT

PARTICULARS	2013	2014	2015	2016
	(Audited)	(Audited)	(Unaudited)	(Projection)
GROSS REVENUE	906,837	1,220,870	1,531,328	1,686,704
OPERATING EXPENSES				
Personal Services	118,736	123,425	132,124	159,832
M O O E				
Misc. Admin. Costs	143,605	167,082	190,505	239,938
RM-Port Facilities	111,989	189,900	143,280	498,150
Interest Expense	0	0	0	0
Currency Adj. Loss	0	0	0	0
Non-Cash Expenses	68,259	75,791	68,128	70,000
Total Expenses	442,589	556,198	534,037	967,920
NET PROFIT BEFORE TAX	464,248	664,672	997,291	718,784
INCOME TAX	140,645	200,700	299,187	214,735
NET PROFIT AFTER TAX	323,603	463,972	698,104	504,049
BTR DIVIDEND	161,802	231,986	349,052	252,024
NET INCOME TO R/E	161,802	231,986	349,052	252,024

Cash Flow

	2013 (Audited)	2014 (Audited)	2015 (Unaudited)	2016 (Projection)
CASH BALANCE, Beginning	200,641	248,294	314,637	515,294
CASH INFLOWS:				
Current year's operating receipts	971,671	1,368,052	1,728,809	1,686,704
Total Cash Inflows	971,671	1,368,052	1,728,809	1,686,704
CASH OUTFLOWS:				
Operating Expenses				
Personal Services	118,738	123,425	132,123	159,832
Admin. Services	143,605	167,082	190,505	239,438
RM-Port Facilities	111,989	189,900	143,280	498,150
Prior Year's Payables	49,462	250,845	207,163	279,000
Capital Outlay	224,714	241,564	360,827	204,000
Dividend payment to national gov't.	120,542	149,415	242,345	349,052
Income taxes	154,970	179,478	251,909	299,187
TOTAL CASH OUTFLOW	924,018	1,301,709	1,528,152	2,028,659
CASH BALANCE at end of the year	248,294	314,637	515,294	173,339

Personal Services

PARTICULARS	2013 (Audited)	2014 (Audited)	2015 (Audited)	2016 (Projection)
Salaries, Permanent	43,192	43,506	46,051	69,541
OTHER				
COMPENSATION/ALLOWANCES				
Overtime	6,176	5,523	5,740	0
Night Shift Differential	316	326	358	136
P E R A	3,716	3,696	3,812	5,472
Uniform/Clothing Allow.	780	770	800	1,140
Rice Allowance	4,096	4,072	4,189	6,019
Medical Allowance	310	308	313	456
Children's Allowance	65	62	62	80
Meal Subsidy	125	122	126	181
13th Month Pay	3,958	3,696	3,758	5,795
Cash Gift	775	774	795	1,140
COLA/Amelioration Allow	21,546	21,784	23,013	34,770
Midyear/Year-end Incentive	17,929	27,101	27,805	20,745
Productivity Incentive	1,065	769	3,819	1,140
Terminal Leave	0	14	47	0
Loyalty Award	50		45	0
Leave Monetization	1,726	1,622	1,622	0
Retirement Gratuity	889	0	0	0
R A T A	3,058	3,290	3,424	3,492
Sub-Total	69,507	73,929	79,728	80,566
FIXED EXPENDITURES				
Pag-IBIG Contributions	186	185	191	274
Philhealth Contributions	681	681	714	1,106
GSIS Premiums	5,170	5,124	5,440	8,345
Sub-Total	6,037	5,990	6,345	9,725
TOTAL PS	118,738	123,425	132,124	159,832